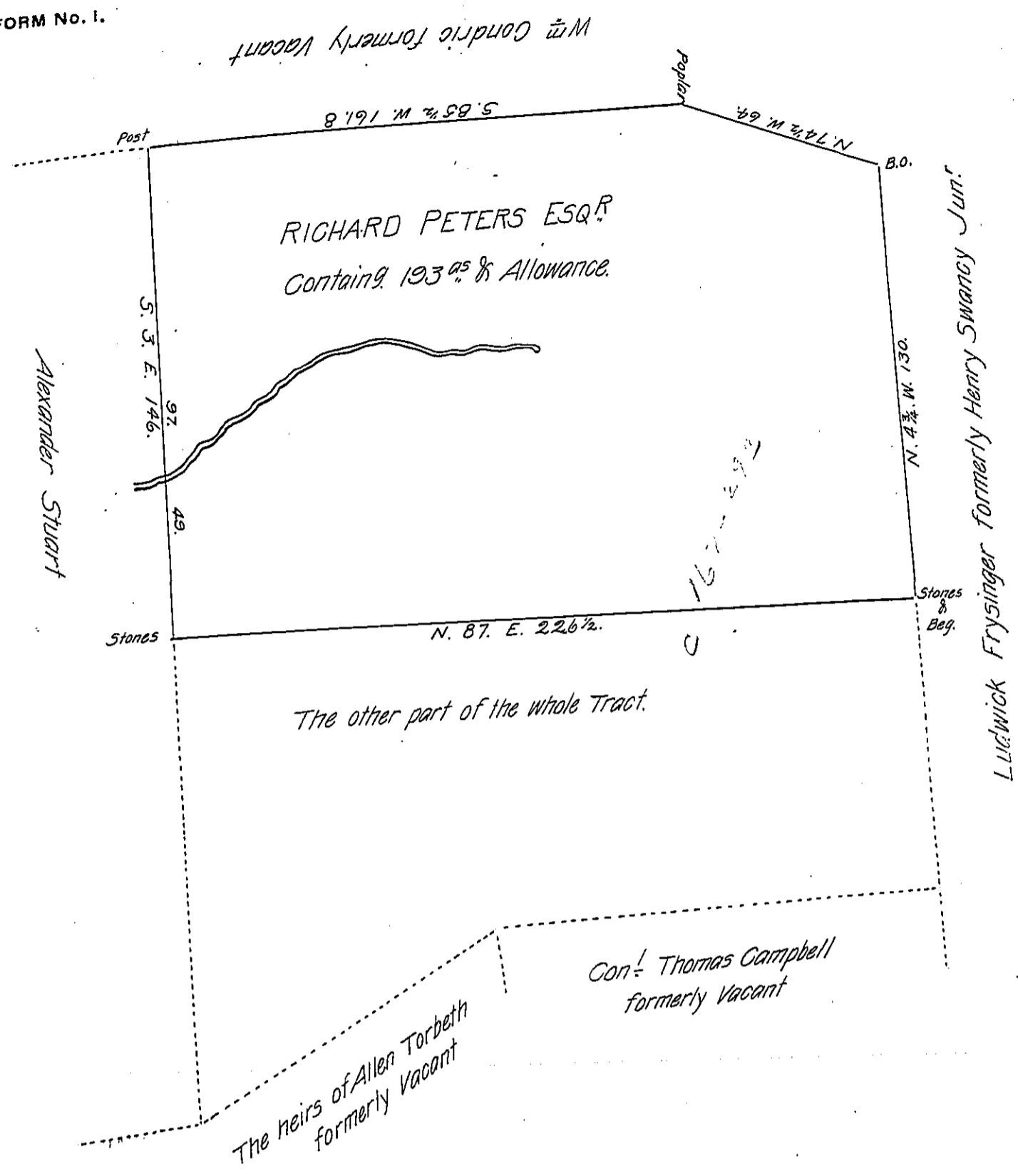


FORM No. 1.



Situate in Manahan Township in the County of York Containg as above set forth 193<sup>ac</sup> And Allowance & c. Being part of a larger Tract of 308 1/2<sup>ac</sup> & Allowance & c. Originally Surveyed on the 13<sup>th</sup> day of October 1751 In pursuance of a warrant Granted to Richard Peters Esq. bearing date the 30<sup>th</sup> day of September A.D. 1749. The Above Resurveyed and divided off from the said larger Tract of Land on the 2<sup>nd</sup> day of April Anno Domini 1810 And returned for Confirmation.

To Andrew Porter Esq.  
Surveyor General  
Lancaster PA

Per  
Jacob Spangler D.S.

IN TESTIMONY that the above is a copy of the original remaining on file in the Department of Internal Affairs of Pennsylvania, made conformably to an Act of Assembly approved the 16th day of February, 1833, I have hereunto set my Hand and caused the Seal of said Department to be affixed at Harrisburg, this thirteenth day of June 1906.

*Laurel G. Brown*  
Secretary of Internal Affairs.